

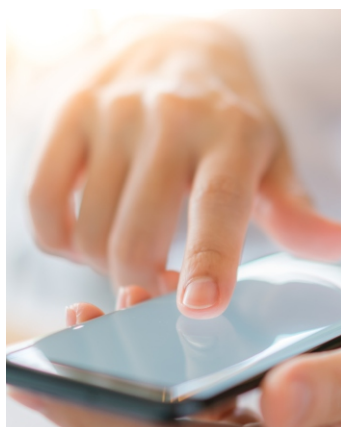
UWB

超広帯域

デジタルキー

- CCC (Car Connectivity Consortium) のデジタルキー機能 (NFC、BLE、UWB) に準拠
- UWBによるキーの距離測定と位置特定 (±10cmの精度)
- BLEによる精度向上、ハードウェア暗号化/復号化
- NFCによる低バッテリー時のバックアップアクセス (ドアの開閉やエンジン始動)

応用



Owner Paring



Car Sharing



Vehicle Access
and Engine Start



Termination and
Suspension

UWB レーダー・アプリケーション (子供の置き去り検知)

- 車内に子どもが放置される悲劇的な事故を防ぎ、熱中症や死亡のリスクを大幅に軽減

Radars quantity in car	1	2	3
Installation position	Headliner	A, B pillar	Seat-backs or A, B pillar
Functions	CPD	CPD Seat Locations Comfort Sensing Respiration Sensing	CPD Seat Locations Comfort Sensing Respiration Sensing Heartbeat Sensing


注記:

インストール構成とレーダーの数は、車種によって異なるサードパーティのアルゴリズムによって異なる場合があります。


超広帯域

Product Specifications

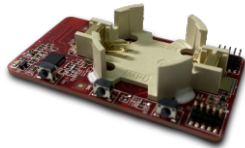
Main Board

Main ICs	NXP S32K146	
	NXP KW45	
	NXP NCJ29D6	
Function & Interface	CAN BUS	
	USB Type C	
	NFC	
	Bluetooth Low Energy 5.3	
	UWB (Ultra-Wideband) Radar	
	Child Presence Detection	
	CCC Digital Key	
GPIOs		
Operating Voltage	6~16V	
Nominal Voltage	12V	
Dimension	PCBA: 100mm X 100mm	

Anchors

Main ICs	NXP KW45	
	NXP NCJ29D6	
Function & Interface	Bluetooth Low Energy 5.3	
	UWB (Ultra-Wideband) ranging	
Operating Voltage	12V	
Dimension	PCBA: 953mm X 526mm	

Key Fob

Main ICs	NXP KW45	
	NXP NCJ29D6	
Function & Interface	CCC Digital Key	
	NFC	
	Bluetooth Low Energy 5.3	
	UWB (Ultra-Wideband) ranging	
	Motion Sensor for power saving	
Operating Voltage	2.5~3.6V (3V, CR2477)	
Dimension	PCBA: 551mm X 290mm	

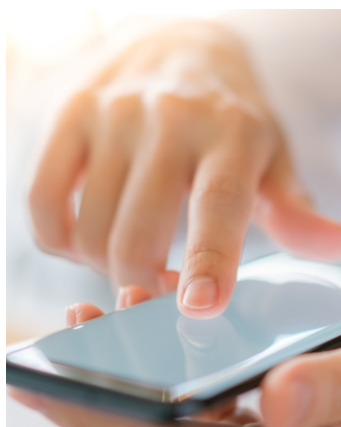
UWB

Ultra-Wide Band

Digital Key

- Compliant with CCC (Car Connectivity Consortium) digital Key features (NFC, BLE, UWB)
- UWB for Key ranging and positioning (up to +/- 10cm accuracy).
- BLE for accuracy improvement, hardware encryption and decryption.
- NFC for backup access for low-battery situation (to open door or engine start)

Application



Owner Paring



Car Sharing



Vehicle Access
and Engine Start



Termination and
Suspension

UWB Radar application (Child Presence Detection)

- Prevent tragic incidents of children being left in hot cars significantly reducing the risk of heatstroke and death.


Radars quantity in car	1	2	3
Installation position	Headliner	A, B pillar	Seat-backs or A, B pillar
Functions	CPD	CPD Seat Locations Comfort Sensing Respiration Sensing	CPD Seat Locations Comfort Sensing Respiration Sensing Heartbeat Sensing

Note: The installation configuration and radar quantity may vary depending on the 3rd party algorithm used in different cars.

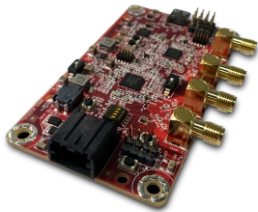
Ultra-Wide Band

Product Specifications

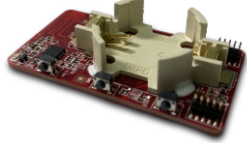
Main Board

Main ICs	NXP S32K146	
	NXP KW45	
	NXP NCJ29D6	
Function & Interface	CAN BUS	
	USB Type C	
	NFC	
	Bluetooth Low Energy 5.3	
	UWB (Ultra-Wideband) Radar	
	Child Presence Detection	
	CCC Digital Key	
GPIOs		
Operating Voltage	6~16V	
Nominal Voltage	12V	
Dimension	PCBA: 100mm X 100mm	

Anchors

Main ICs	NXP KW45	
	NXP NCJ29D6	
Function & Interface	Bluetooth Low Energy 5.3	
	UWB (Ultra-Wideband) ranging	
Operating Voltage	12V	
Dimension	PCBA: 953mm X 526mm	

Key Fob

Main ICs	NXP KW45	
	NXP NCJ29D6	
Function & Interface	CCC Digital Key	
	NFC	
	Bluetooth Low Energy 5.3	
	UWB (Ultra-Wideband) ranging	
	Motion Sensor for power saving	
Operating Voltage	2.5~3.6V (3V, CR2477)	
Dimension	PCBA: 551mm X 290mm	